

King George V House, King George V Road,
Amersham, Buckinghamshire, HP6 5AW
01895 837236
democraticservices@chiltern.gov.uk
www.chiltern.gov.uk



CHILTERN
District Council

Services Overview Committee (CDC)

Wednesday, 13 June 2018 at 6.30 pm

**Large & Small Committee Room, King George V House, King George V
Road, Amersham**

SUPPLEMENT A G E N D A

Item

- 5 Redevelopment of the Chiltern Pools and adjacent Community Facilities (*Pages 3 - 18*)

Presentation

Note: All reports will be updated orally at the meeting if appropriate and may be supplemented by additional reports at the Chairman's discretion.

Membership: Services Overview Committee (CDC)

Councillors: (Chairman)
M Titterington (Vice-Chairman)
J Burton
D Bray
J Cook
E Culverhouse
M Flys
M Harker
C Jackson
P Jones
S Patel
C Rouse
J Rush
L Smith
N Varley
H Wallace

Date of next meeting – Tuesday, 9 October 2018

Audio/Visual Recording of Meetings

This meeting might be filmed, photographed, audio-recorded or reported by a party other than the Council for subsequent broadcast or publication. If you intend to film, photograph or audio record the proceedings, or if you have any questions please contact Democratic Services. Members of the press please contact the Communications Team.

If you would like this document in large print or an alternative format, please contact 01895 837236; email democraticservices@chiltern.gov.uk



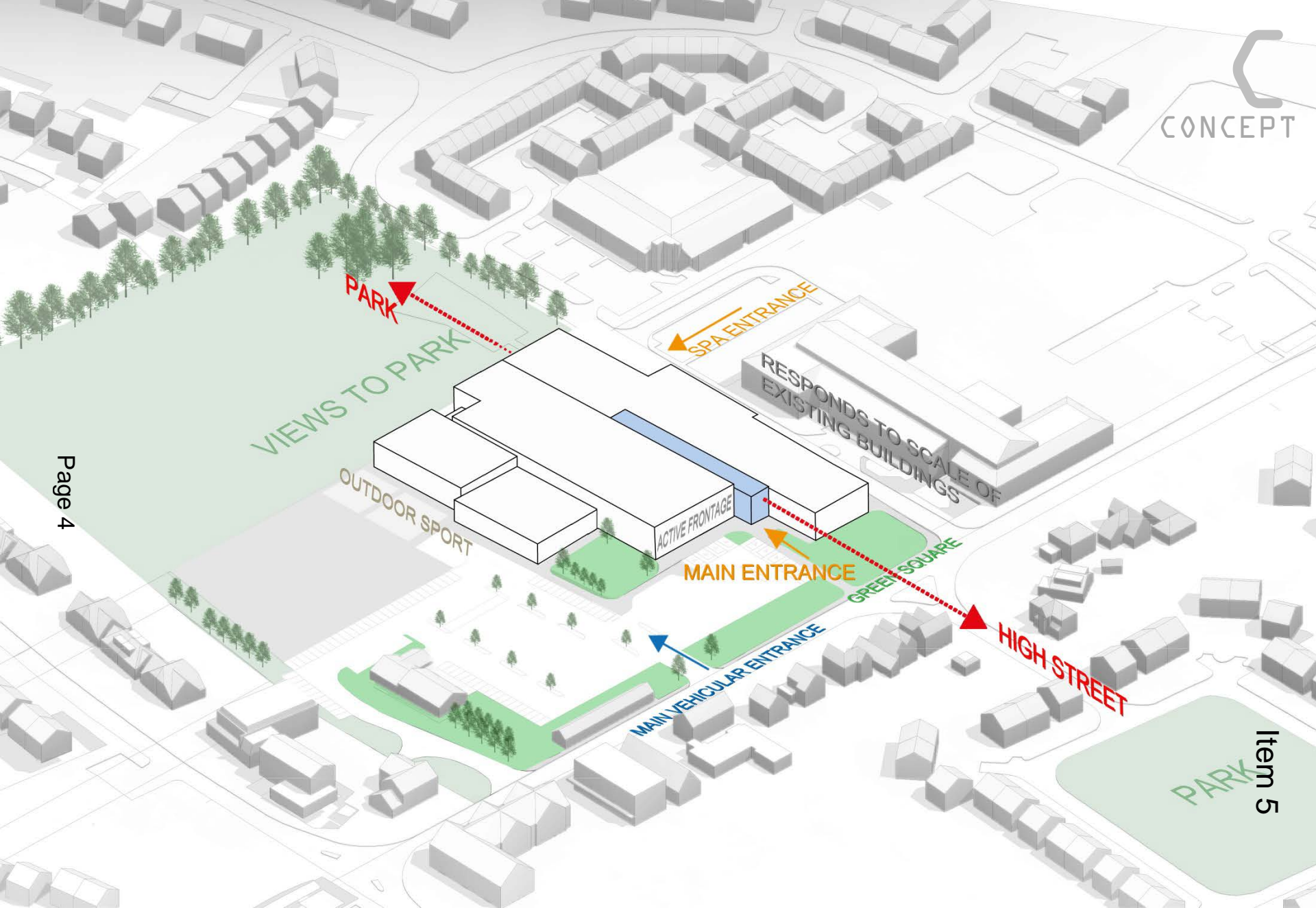


CHILTERN LIFE CENTRE

RIBA STAGE 2 DESIGN
ON BEHALF OF

CHILTERN DISTRICT COUNCIL

Item 5



CONCEPT

Page 4

Item 5

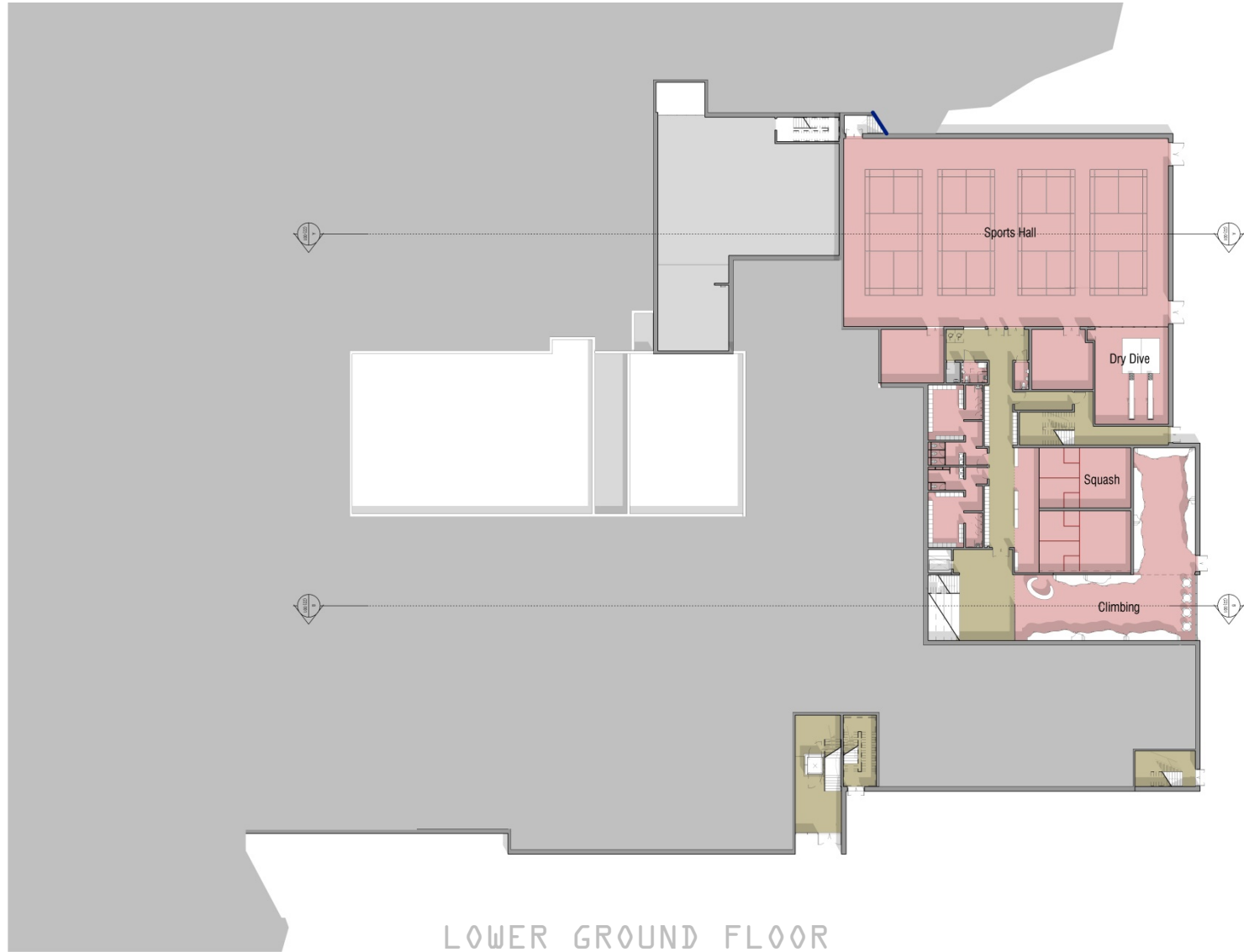
COMMUNITY

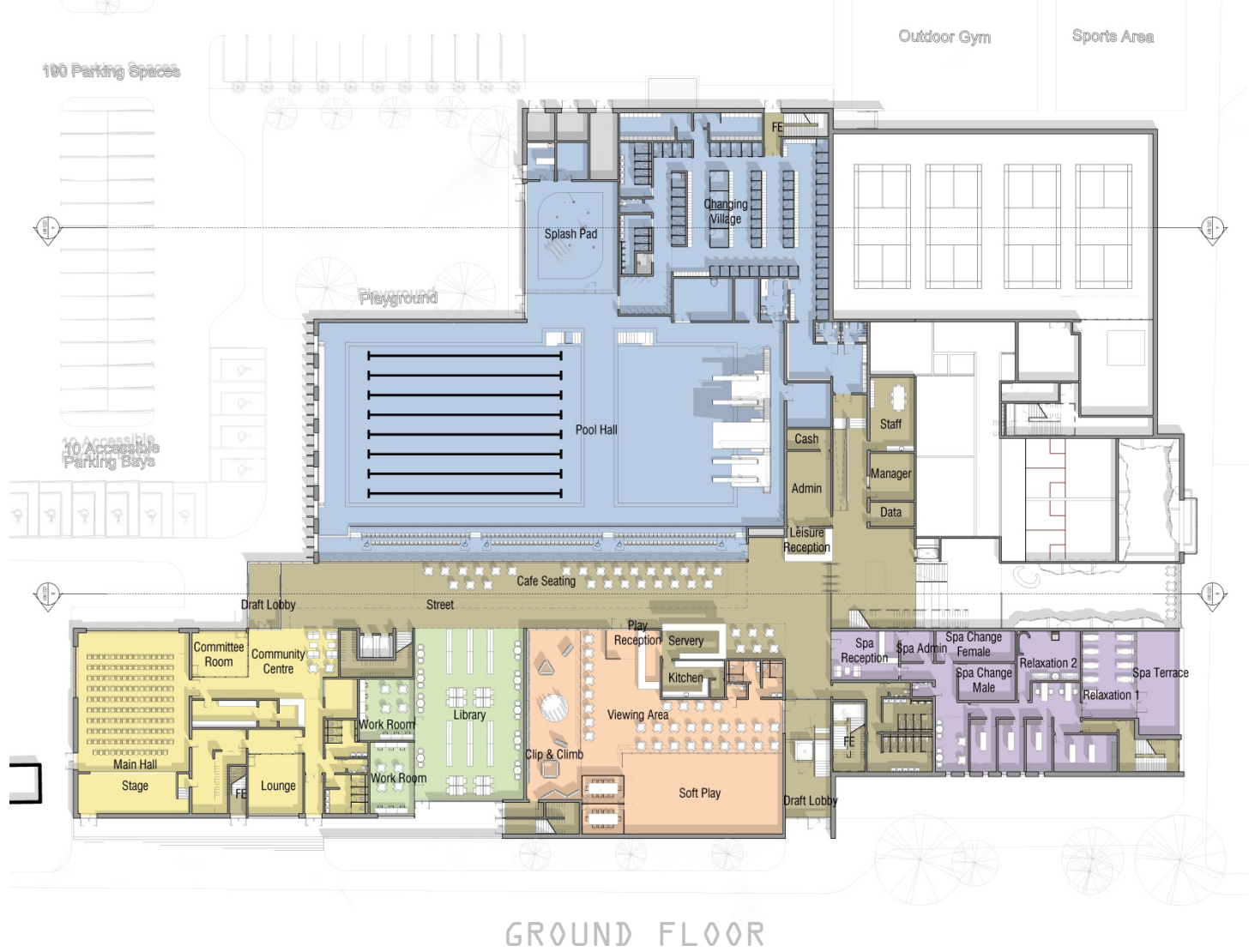
LIBRARY

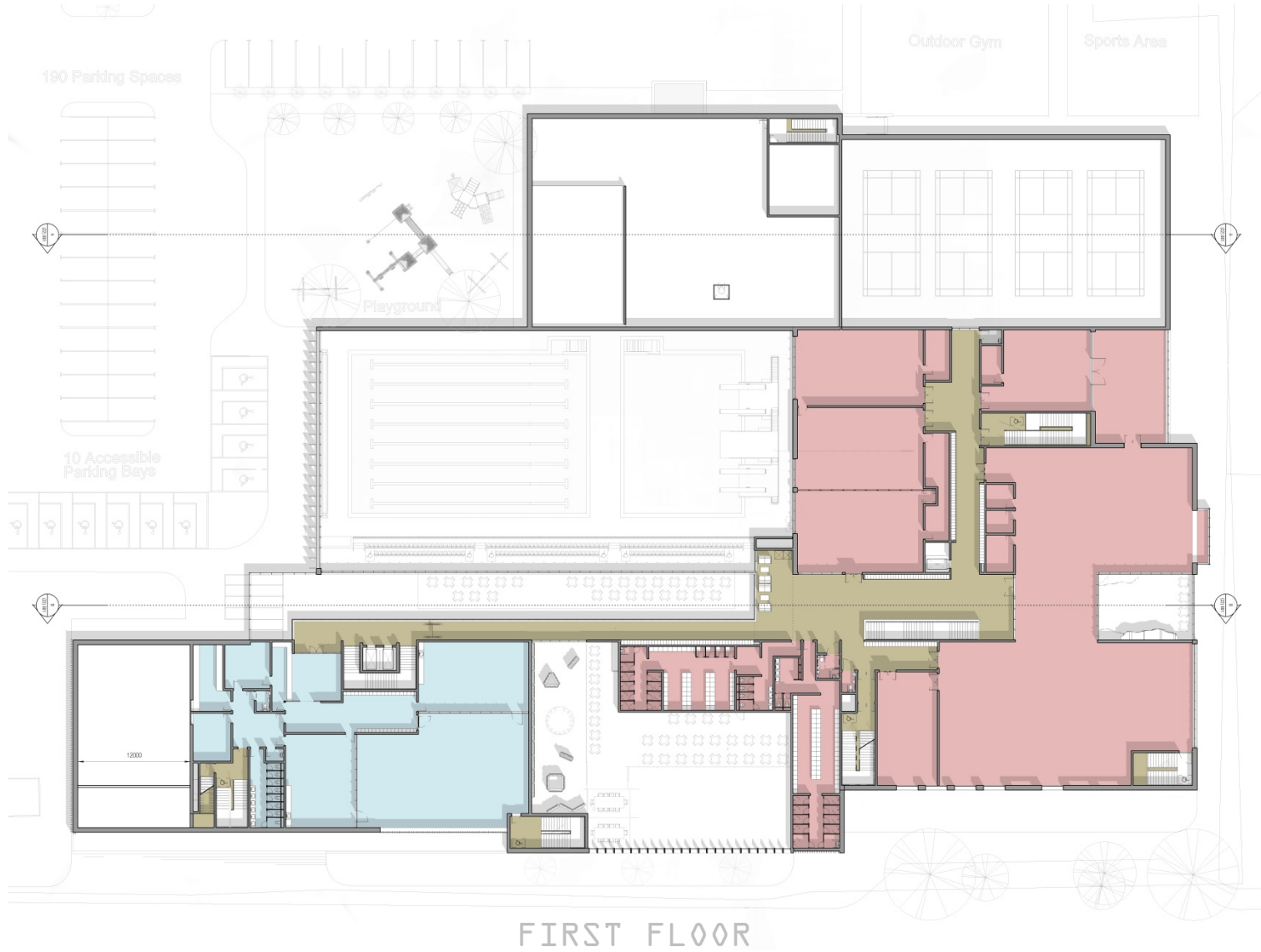
- 1 NURSERY
FITNESS
STUDIOS
- 0 SWIMMING POOL
COMMUNITY CENTRE
LIBRARY
PLAY AREA
CAFE
SPA
- 1 SPORTS HALL
SQUASH COURTS
CLIMBING

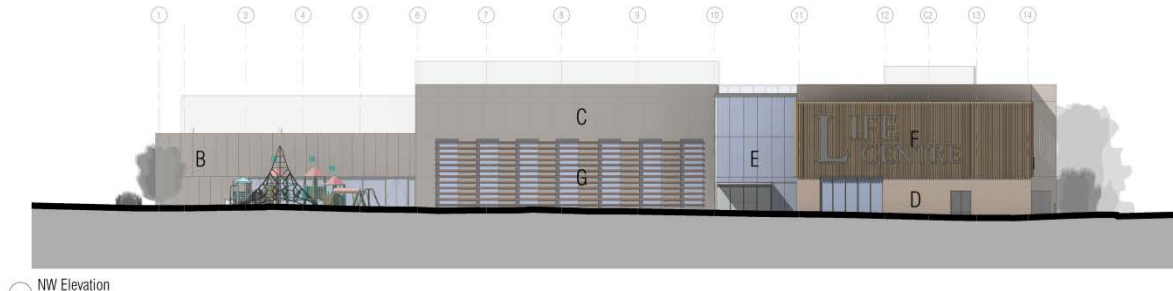
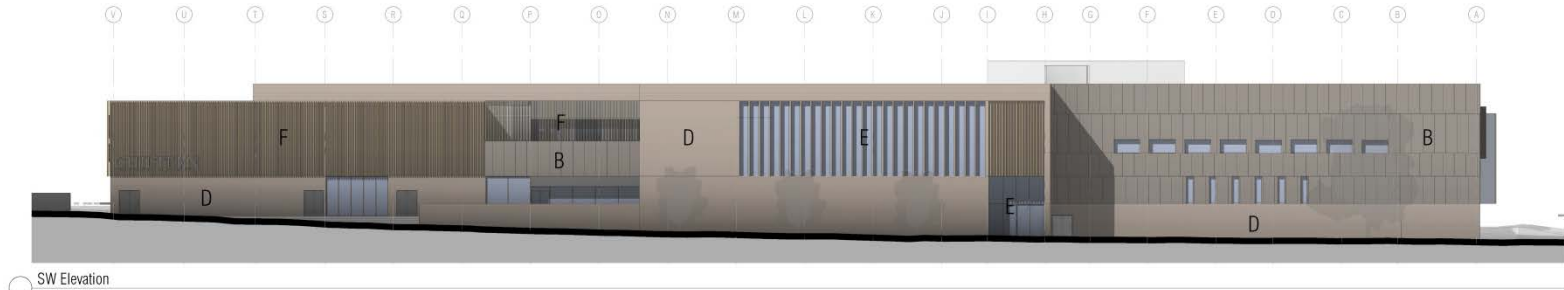
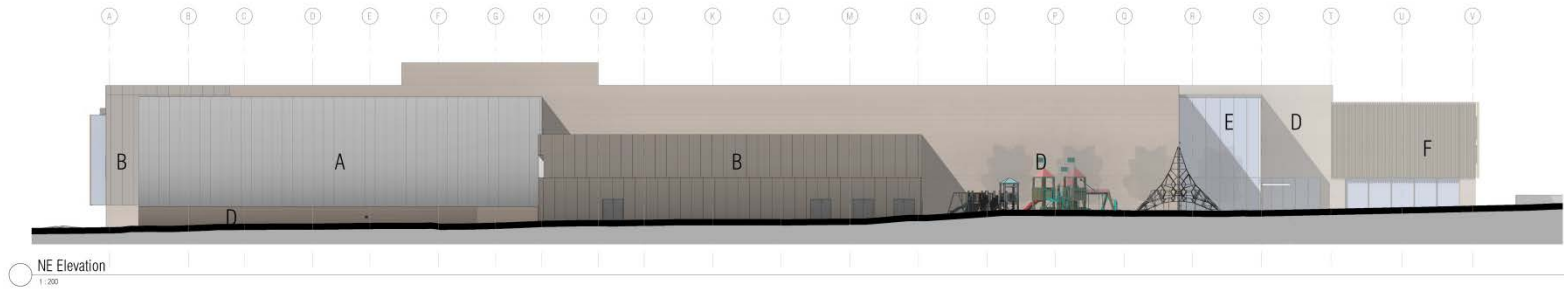
Page 5

Item 5



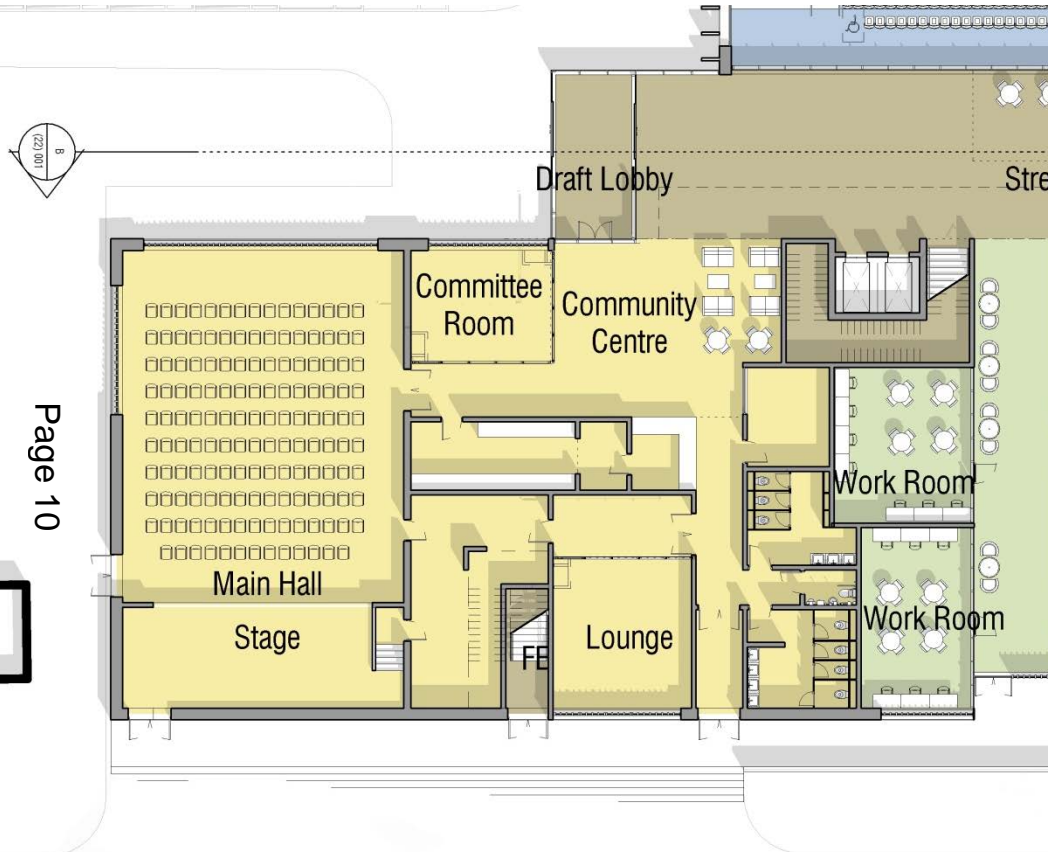




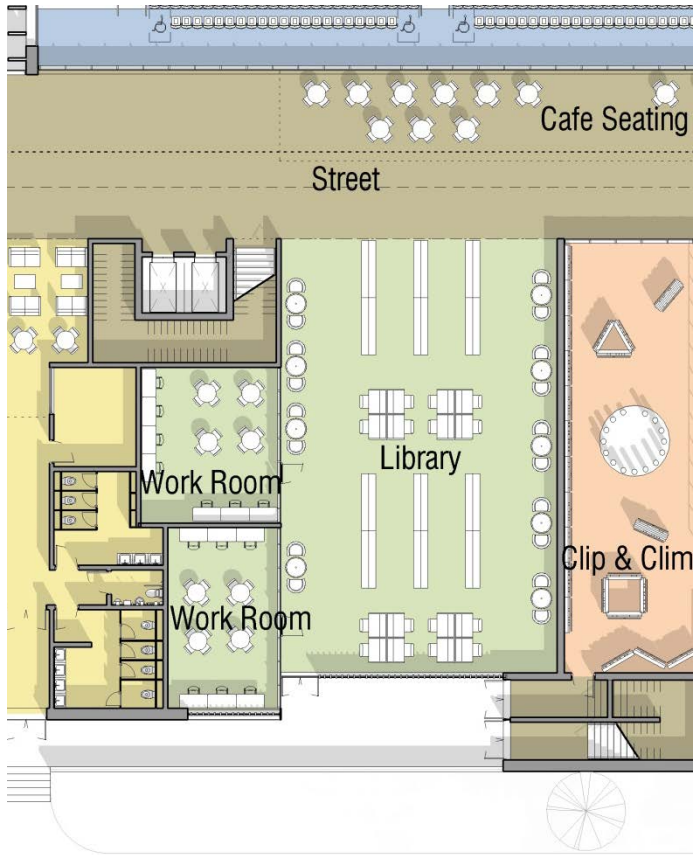


KEY

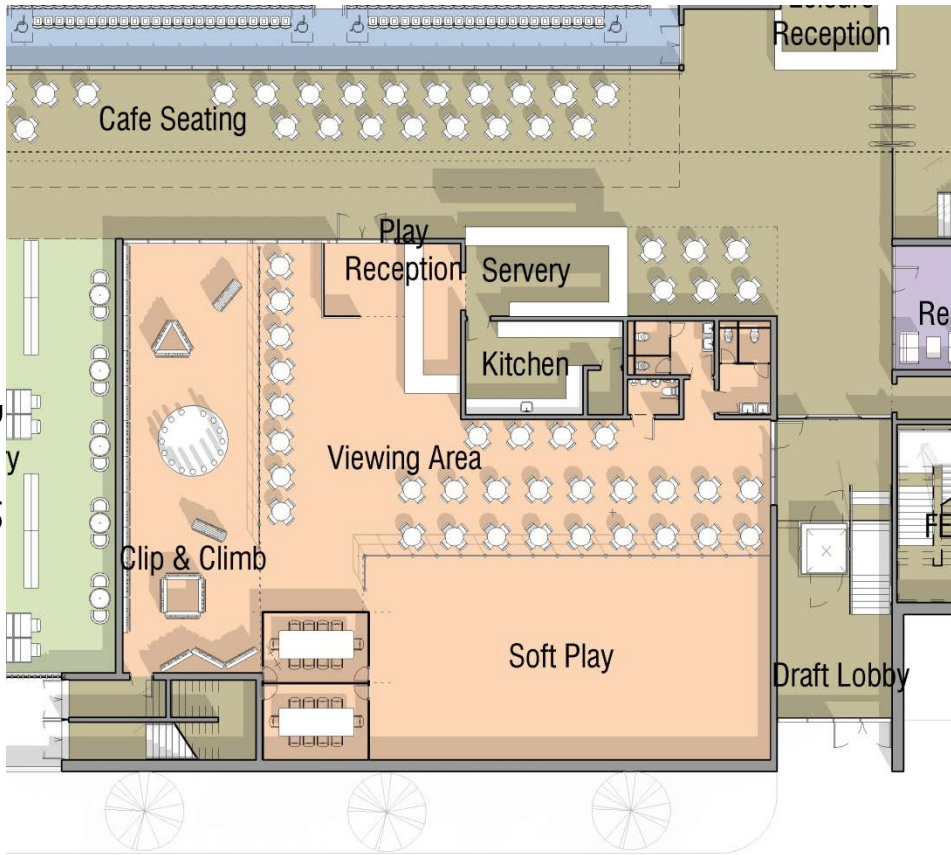
- A - Kingspan Cladding 1
- B - Alucobond Bronze Metallic
- C - Kingspan Cladding 2
- D - Rustic Brick
- E - Glazing
- F - Timber Slates
- G - Brise-Soleil



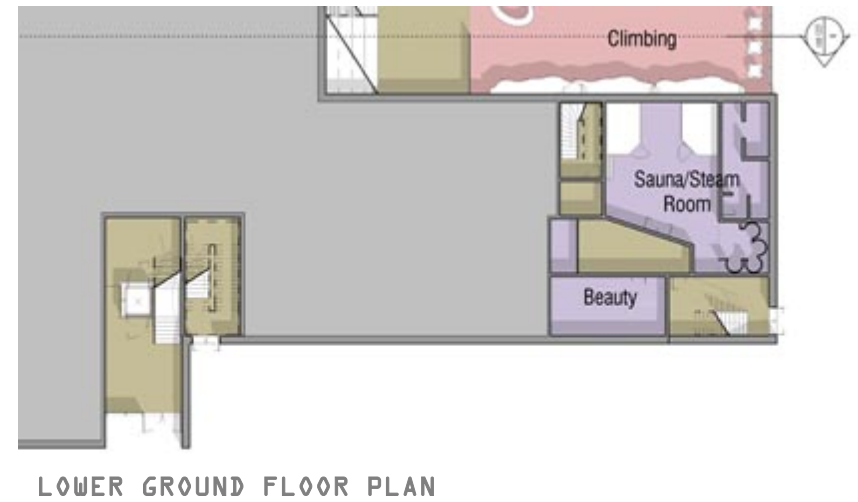
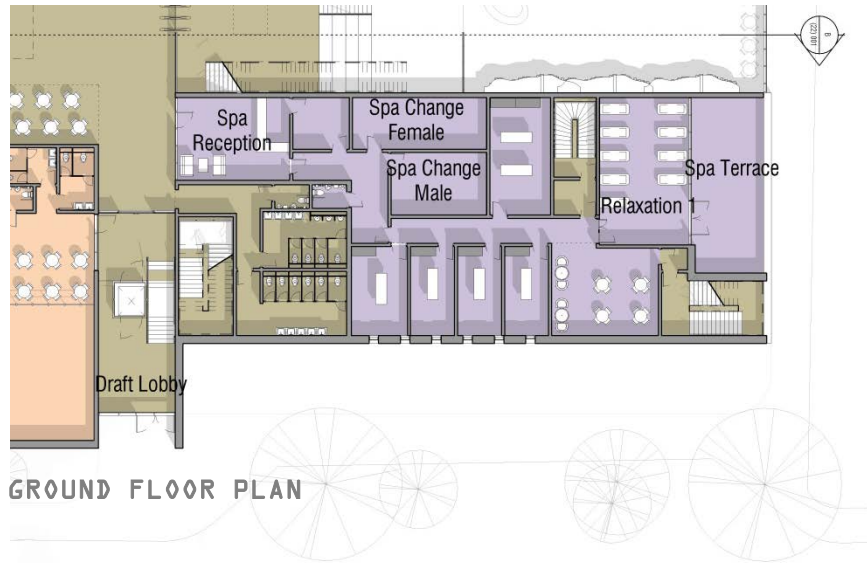
GROUND FLOOR - COMMUNITY CENTRE



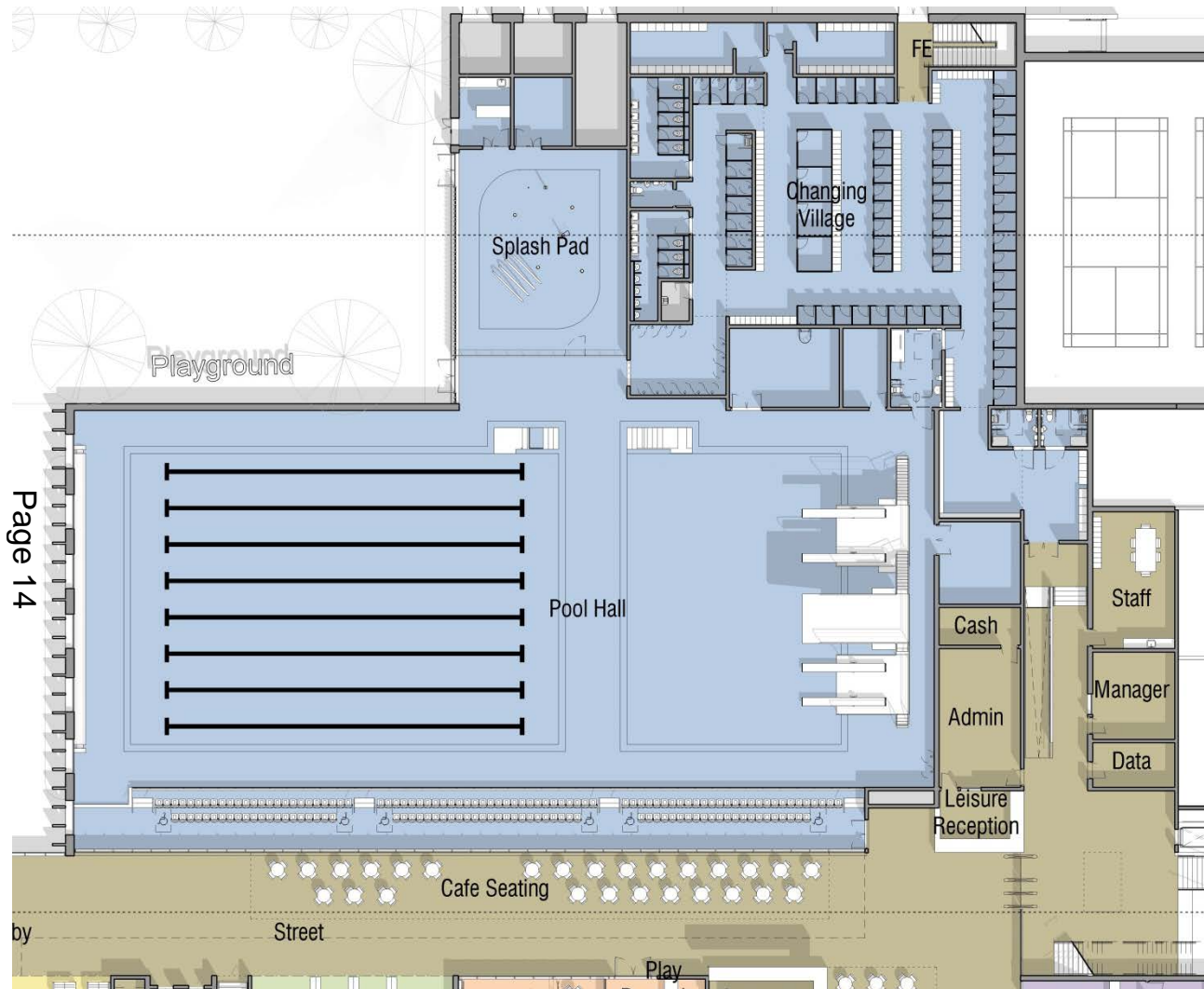
GROUND FLOOR - LIBRARY



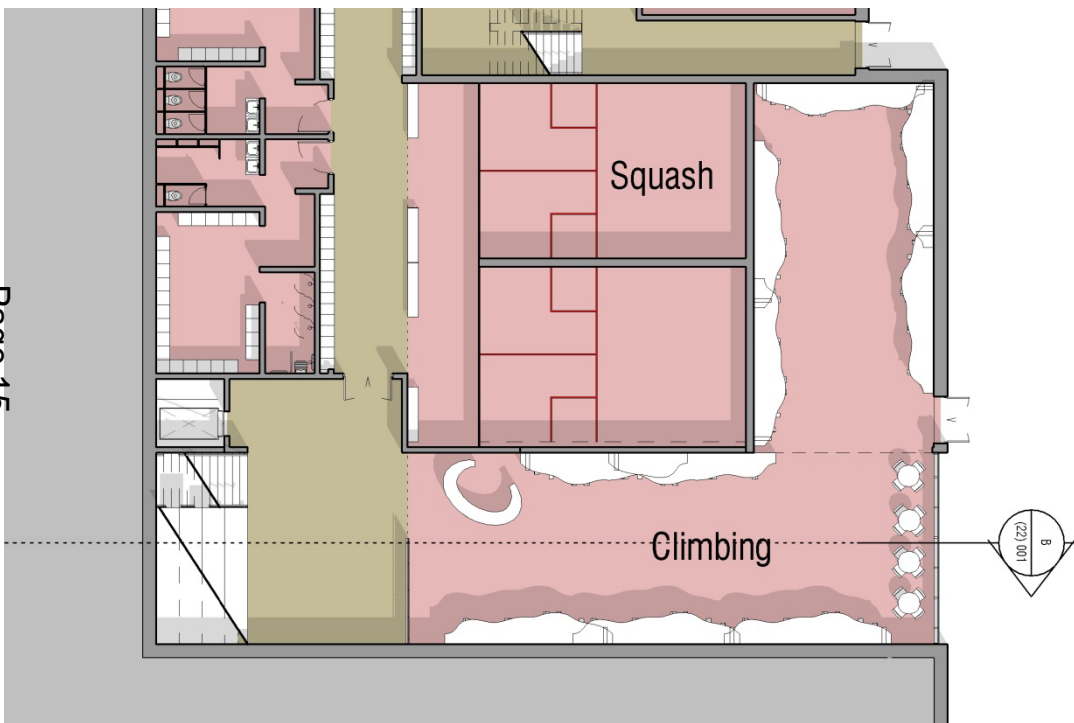
GROUND FLOOR - PLAY AREA



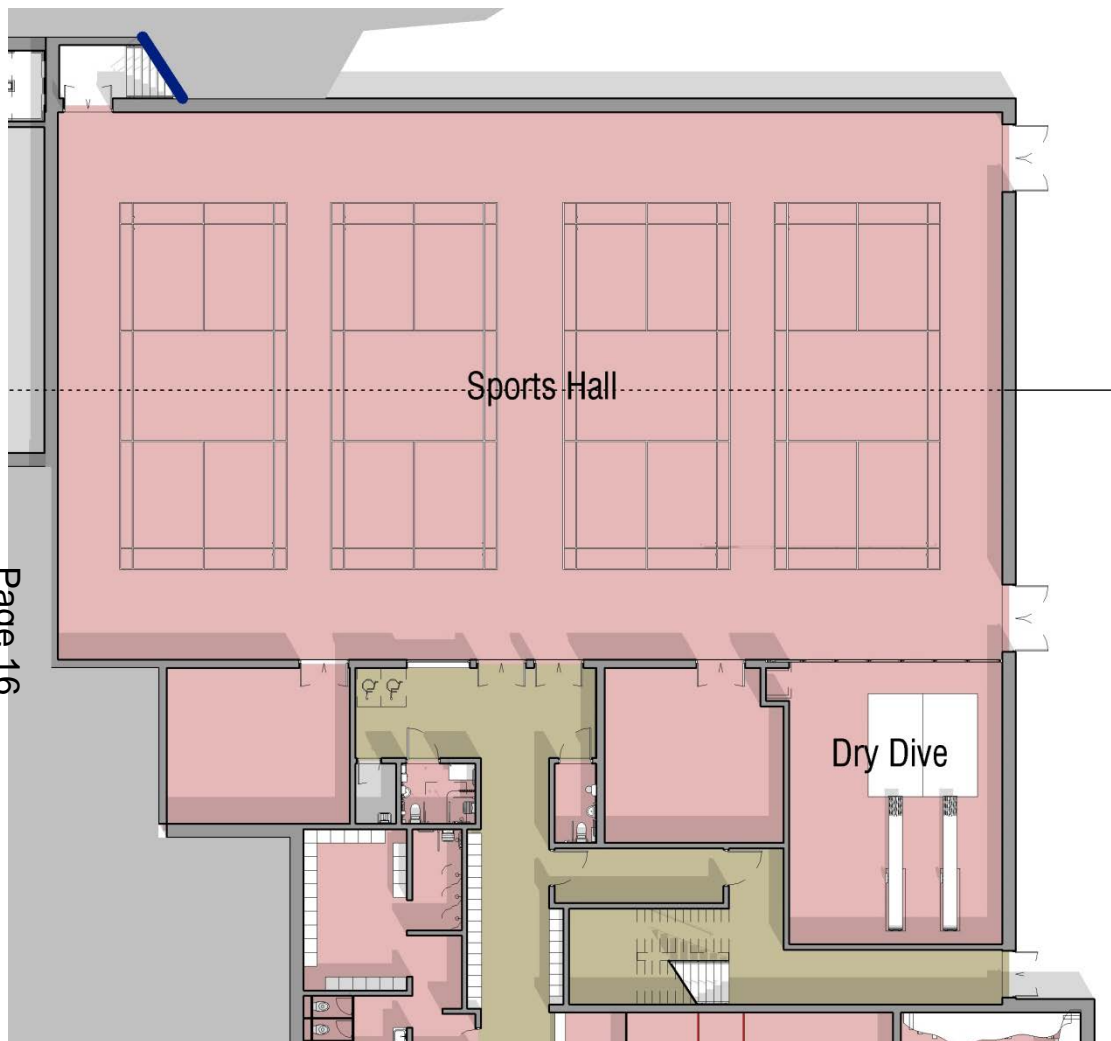
SPA



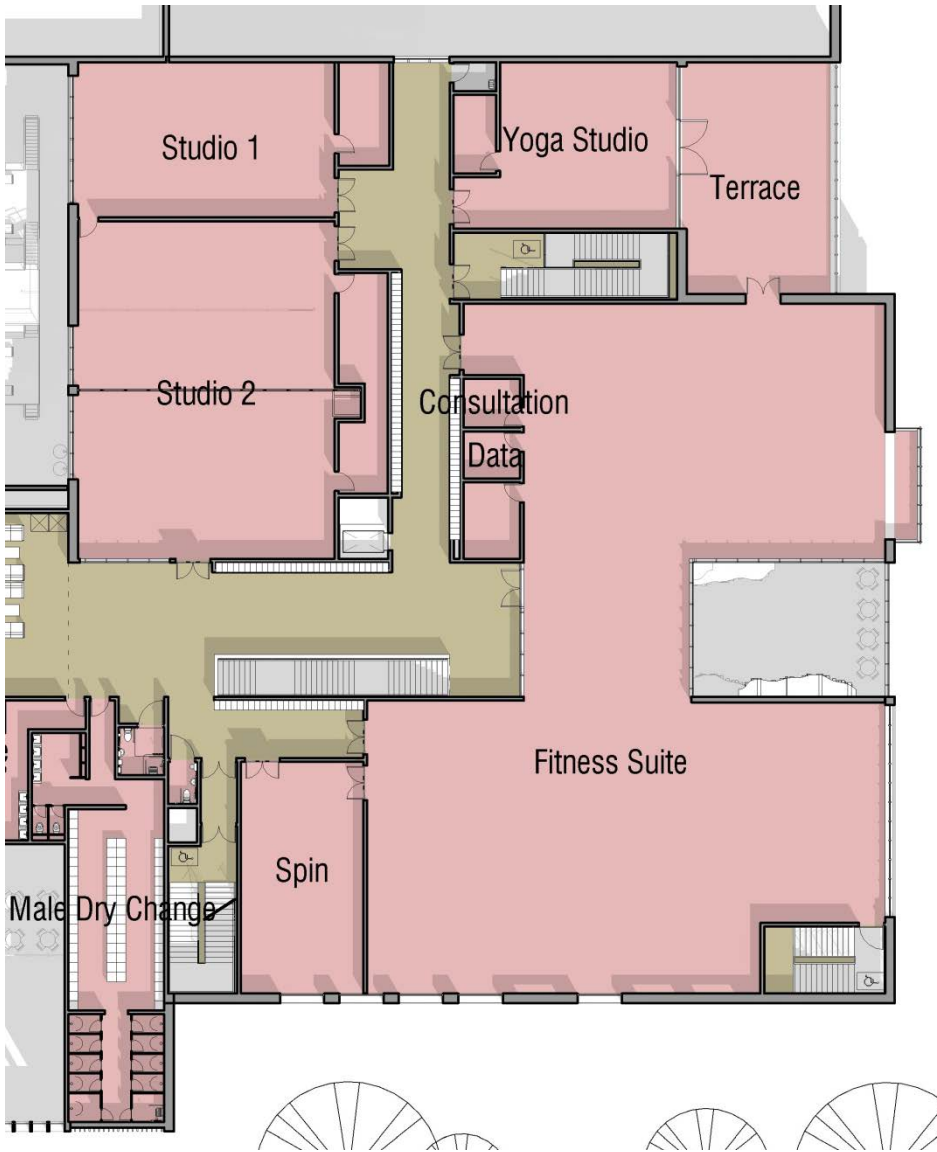
GROUND FLOOR - POOL HALL



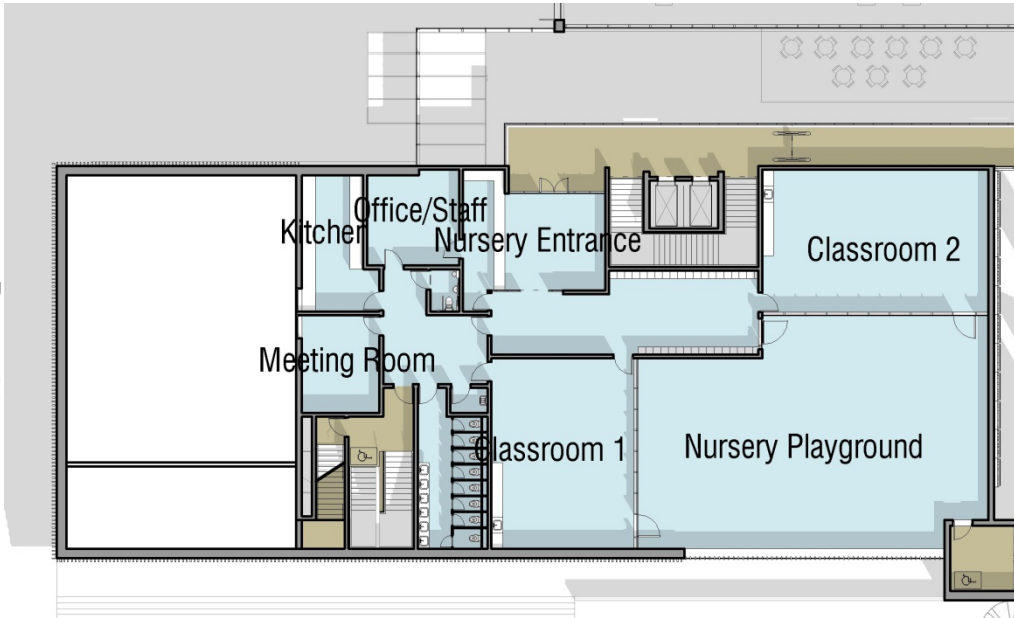
LOWER GROUND FLOOR - CLIMBING



LOWER GROUND FLOOR - SPORTSHALL



FIRST FLOOR - FITNESS



FIRST FLOOR - NURSERY